

KINGSGROVE 190

With a striking entry way, four spacious bedrooms, a double garage and smart storage solutions, the whole family will enjoy living in the ingeniously designed Kingsgrove. The two secondary bedrooms have been thoughtfully positioned off a separate hallway to minimise noise coming from the kitchen, creating a private sleep sanctuary. Similarly, the master suite has been intentionally situated at the front of the home for optimal privacy. The open plan design joins the kitchen, family room and dining area together to create the ultimate communal living space for socialising with family members.



3



2



2



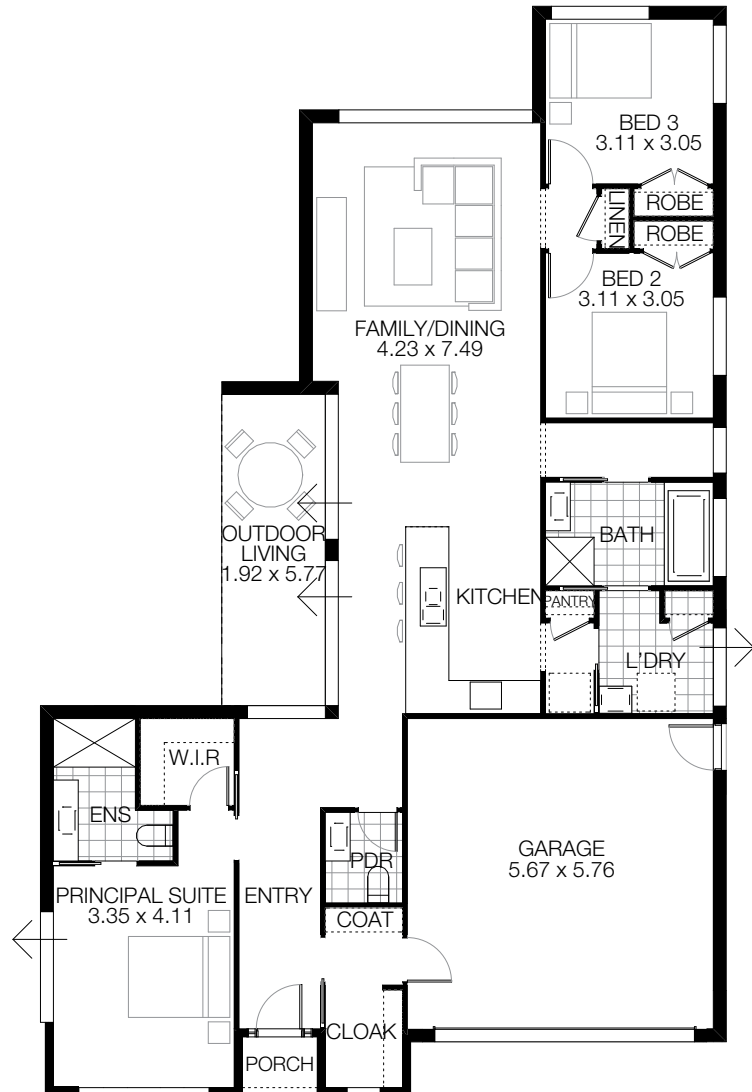
SOMERTON FAÇADE



OXLEY FAÇADE

KINGSGROVE 190

MIN LOT WIDTH	15m	
MIN LOT DEPTH	30m	
HOME WIDTH	12.71m	
HOME LENGTH	20.28m	
RESIDENCE	141.40sqm	15.22sq
PORCH	1.30sqm	0.13sq
OUTDOOR LIVING	11.40sqm	1.22sq
GARAGE	35.40sqm	3.81sq
TOTAL	189.50sqm	20.39sq



“WITH OVER 30 YEARS’ EXPERIENCE, BURBANK OFFERS EXCEPTIONAL SERVICE, OUTSTANDING QUALITY AND A WIDE RANGE OF HOME SOLUTIONS TO SUIT EVERY LIFESTYLE. BURBANK’S MISSION IS TO CREATE PLACES FOR PEOPLE TO CALL HOME.”

Jarrod Sanfilippo
Managing Director

*Copyright conditions. All photos and illustrations are representative only. Floor plans and specifications may be varied by Burbank Australia Pty Ltd (“Burbank”) without notice, the dimensions are diagrammatic only and a Building Contract with final drawings will display correct dimensions and detail. All designs are the property of Burbank and must not be used, reproduced, copied or varied, wholly or in part without written permission from an authorised Burbank representative. Copyright Burbank Australia (NSW) Pty Ltd. ABN 88610822770.



Call 13 BURBANK Visit burbank.com.au

Burbank 
#noplacelikehome